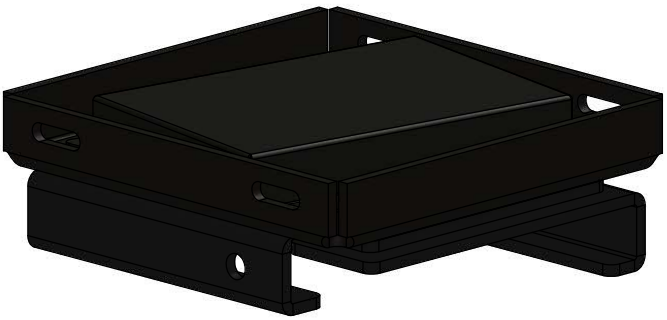


REVISIONS				
ZONE	REV.	DESCRIPTION	DATE	APPROVED



ITEM NO.	PART NUMBER	MATERIAL	REV	THICKNESS	DESCRIPTION	QTY.
1	HBOLT 0.3750-16x6x1-S	Material <not specified>			HEX BOLT	1
2	HNUT 0.3750-16-D-N	Material <not specified>			HEX NUT	1
3	PTS-2011-001-3	BLACK UHMW SHEET	A	.125	MIDDLE PLATE, SLIDE	1
4	PTS-2011-001-5	ASTM A36 Steel	A	.059	SPRING COVER	1
5	PTS-2011-001-20	AISI 304		.1875	S.S. FLAT WASHER	6
6	PTS-2011-A01	SEE BOM			BASE WELDMENT	1
7	PTS-2011-A02	SEE BOM			SPRING BRACE WELDMENT	1
8	PTS-2011-UNIVERSAL-UHMW-SPRING	BLACK UHMW ROUND		1.00" ROUND	UHMW SPRING	1
9	SHSSCREW 0.5x0.5-S				SOCKET HEAD SHOULDER SCREW	4

CUSTOMER : PUBLIC TRANS SAFETY		
PART NUMBER: PTS-2011-001		
DESCRIPTION : SPRING LOADED RECEIVER ASSEMBLY		
MATERIAL: SEE BOM		THICKNESS:
FINISH:	Drawn By: CRAIG	DATE: 3/19/2012
PRESS BRAKE INFORMATION		UNLESS OTHERWISE SPECIFIED TOLERANCE INFORMATION
BEND DEDUCTION	X = + OR -.030    XX = + OR -.020    XXX = + OR -.010	
PRESS BRAKE V DIE	FRACTION = + OR - 1/16"    ANGLES = + OR - 1/2 DEG	
PRESS BRAKE PUNCH		

# PMF

## PACIFIC METAL FAB

*Defining The Cutting Edge In Metal Fabrication*  
 PRECISION METAL FABRICATION, DESIGN ENGINEERING & ASSEMBLIES  
 311 CHAMBERS ST. EUGENE, OR 97402 - PO BOX 41090 EUGENE, OR 97404  
 (541) 747-7331 - 1-877-747-7331 - FAX (541) 747-6130

THIRD ANGLE PROJECTION 	WEIGHT: 24.029	SCALE: 1:8
REVISION		SHEET 1 OF 1

Drawing Location: F:\01-PMF-Engineering\OfficeFiles\Customer Info\Public Trans Safety\PTS-2011-001\